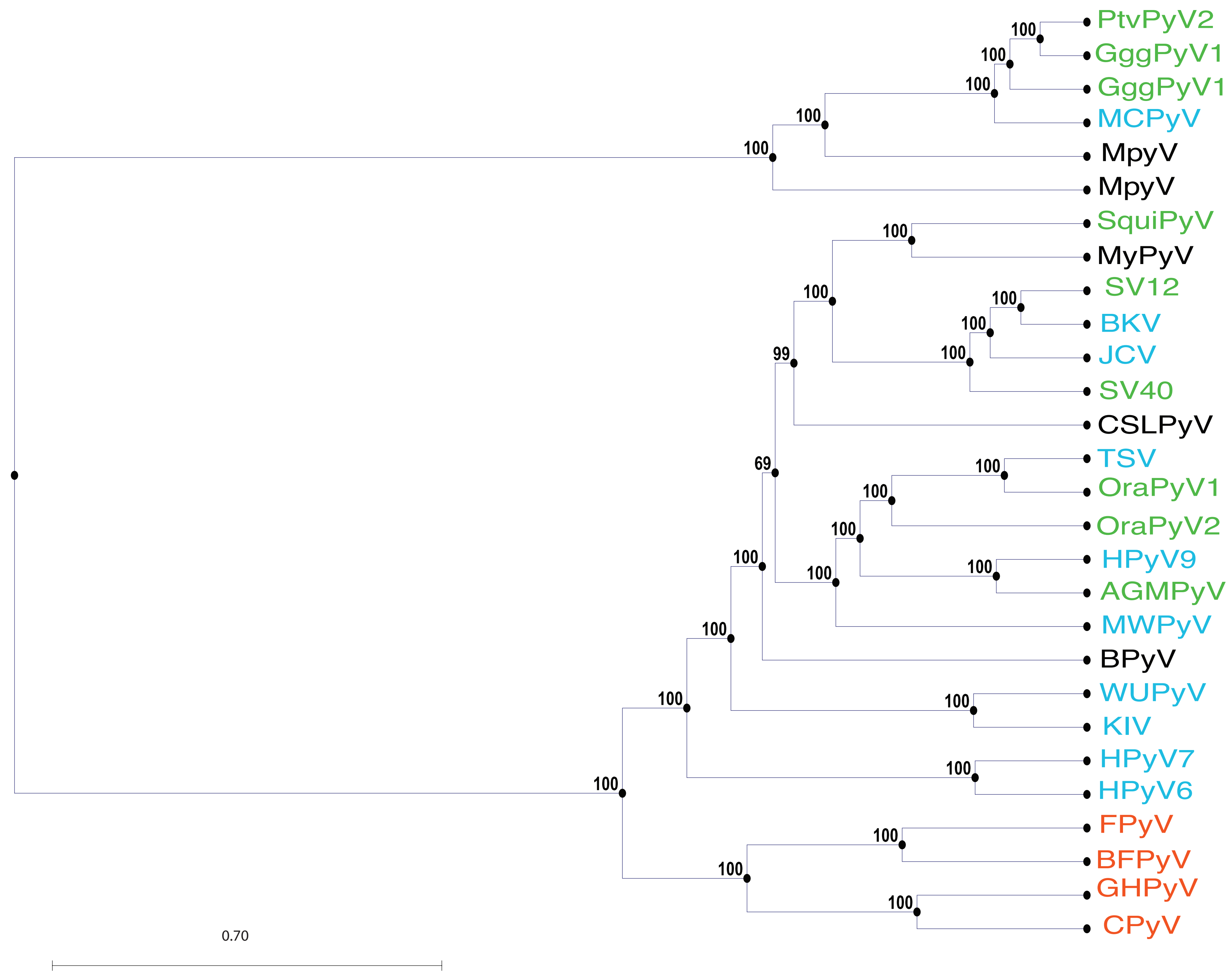
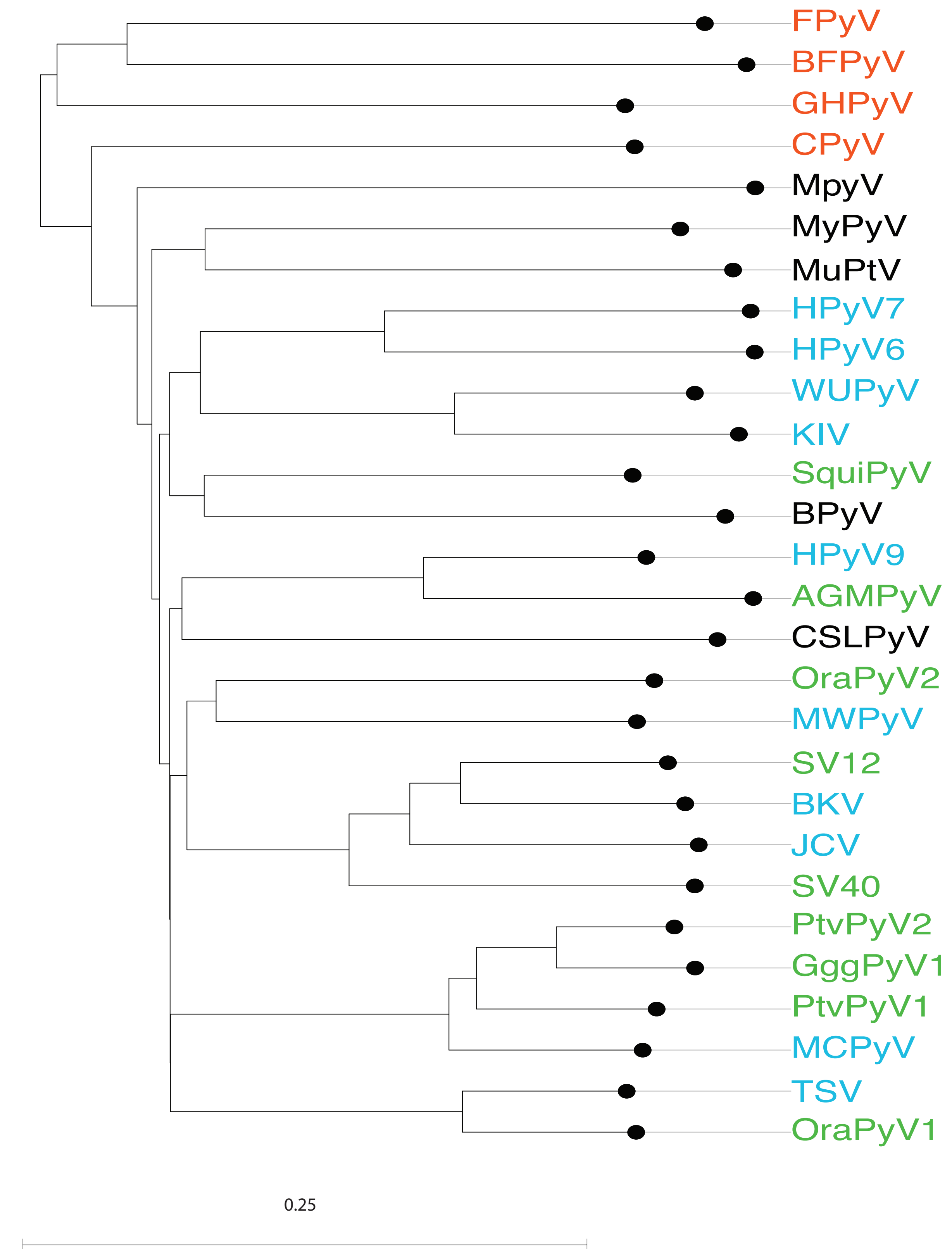


A**B**

Legend: A. Phylogenetic tree for PyV genome sequences. Blue names correspond to human PyV strains, green names correspond to non-human primate PyV strains, black names correspond to non-primate mammal PyV strains, and red names correspond to bird PyV strains. Although the bird PyV genomes cluster together, the human polyomaviruses do not cluster together and instead show varying divergence with other mammalian PyV strains. **B.** Backbone for Mauve alignment. Colors same as Figure S1A. The mouse and bat PyV strains now cluster together, but OraPyV1 and OraPyV2 no longer cluster together (although they do if MWPyV isn't considered for the alignment)